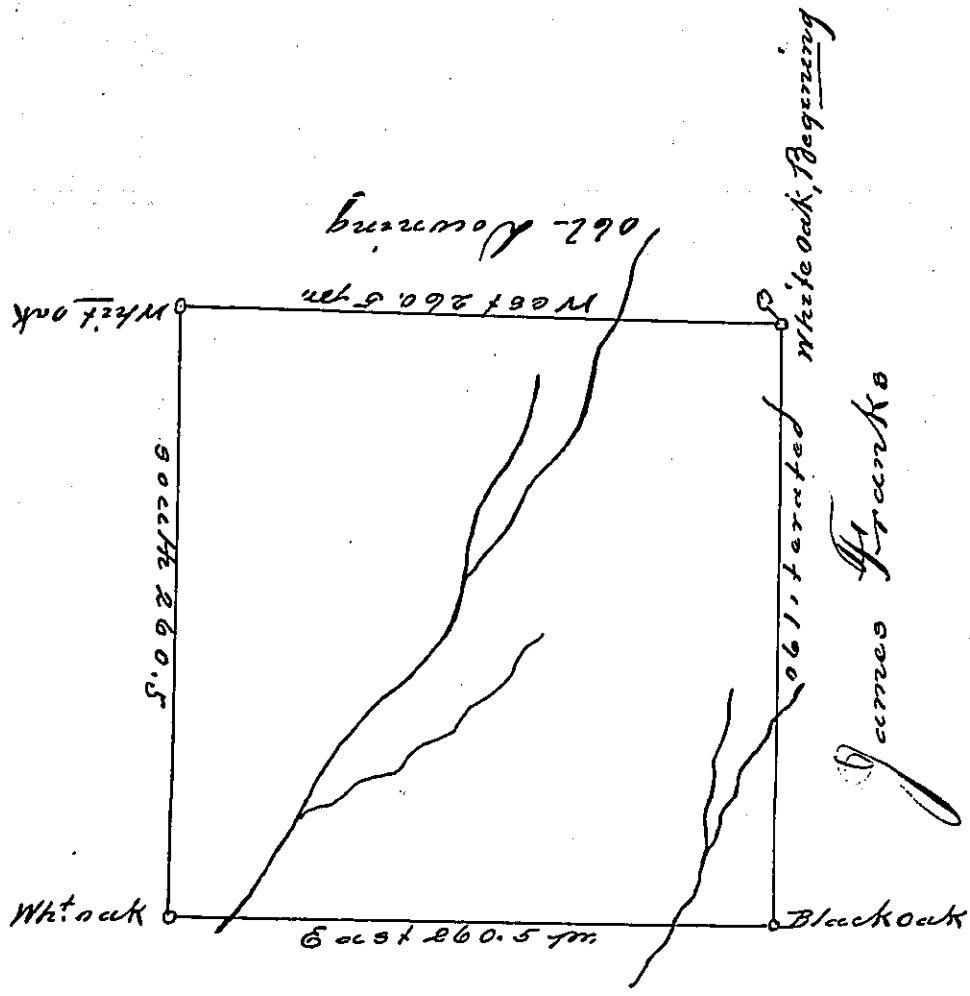


P-35-430  
Thos Leiper



The above is a Draught of a survey made Dec<sup>r</sup> 2<sup>d</sup> 1784 in  
 in pursuance of a Warrant granted to William Richardson  
 Dated Dec<sup>r</sup> 18<sup>th</sup> 1784. situated on Swin Run a branch of  
 Wheeling Creek in Washington County. Called Red Thorn Bot-  
 tom, containing four hundred acres with an allow<sup>e</sup> of 6 m.  
 c<sup>t</sup> for Roads.

David Redick D.J.

John Lukens Esq<sup>r</sup>  
 Jun. Gen<sup>l</sup>

IN TESTIMONY that the above is a copy of the original remaining on file in  
 the Department of Internal Affairs of Pennsylvania, made  
 conformably to an Act of Assembly approved the 16<sup>th</sup> day of  
 February, 1833, I have hereunto set my Hand and caused  
 the Seal of said Department to be affixed at Harrisburg,  
 this second day of January, 1900

*James W. Pitts*  
 Secretary of Internal Affairs.